



SELECT CRAWLER CRANE

SPECIFICATION SHEETS



Crawler Crane

LR 1130
Litronic®

EN

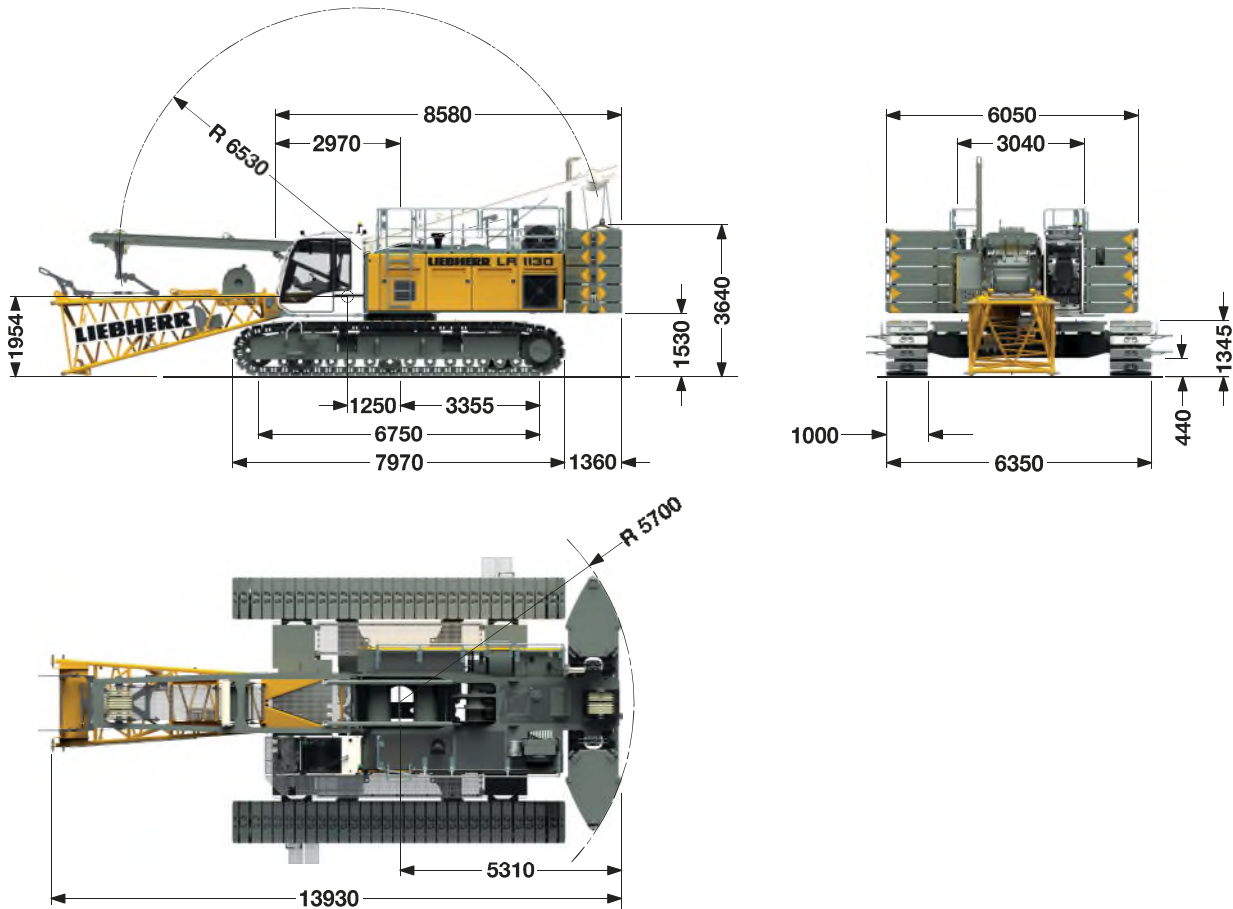
LR 1002.03



LIEBHERR

Dimensions

Basic machine with undercarriage



Operating weight

The operating weight includes the basic machine with crawlers, 2 main winches 120 kN and 17 m main boom, consisting of A-frame, boom foot (7 m), boom head (10 m), 52.3 t basic counterweight, 20 t carbody-counterweight and 160 t hook block.

Total weight ————— approx. 146.1 t

Ground pressure

The actual ground pressure is calculated according to the configuration and position of the machine and displayed in the operator's cab. Using the optional Liebherr Crane-Planner the actual ground pressure, amongst other parameters, can already be calculated and displayed in the planning stage.

Equipment

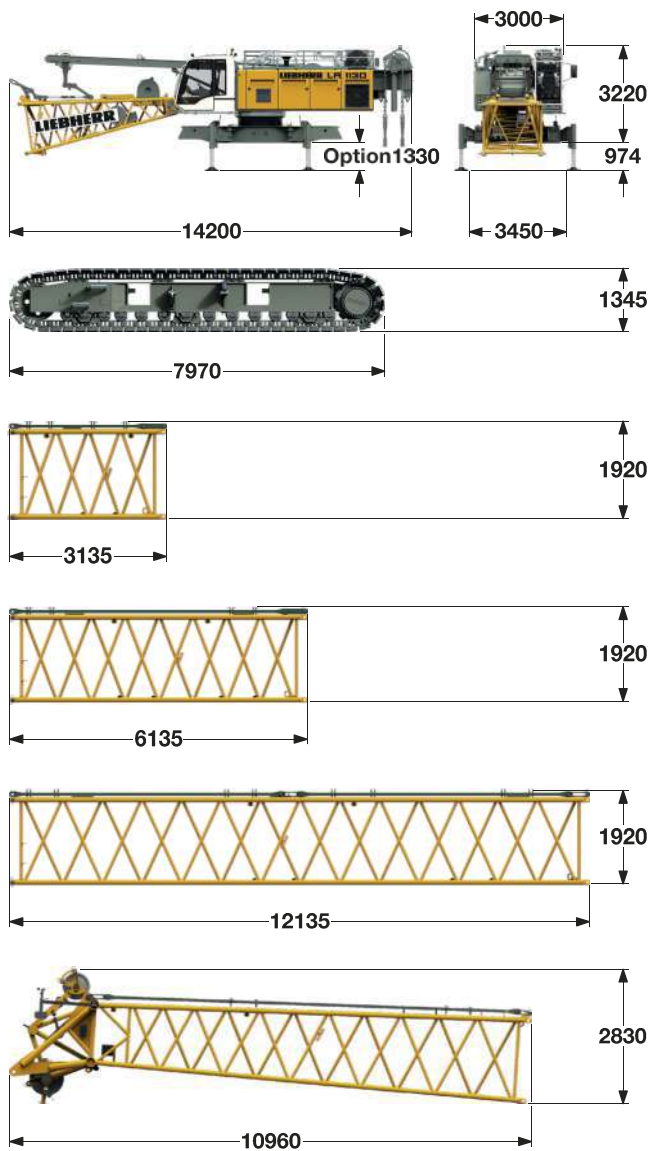
Main boom (No. 2017.xx) max. length	80.0 m
High reach (No. 2017.xx and 1309.xx)	92.9 m
Luffing jib (No. 1309.xx) max. length	78.5 m
Max. combination	main boom 47.0 m luffing jib 78.5 m
Fixed jib (No. 0806.xx)	11 – 32 m
Auxiliary jib 24 t (option 36 t)	

Remarks

1. The lifting capacities stated are valid for lifting operation only (corresponding with crane classification according to F.E.M. 1.001, crane group A1).
2. Crane standing on firm, horizontal ground.
3. The weight of the lifting device (hoist ropes, hook block, shackle etc.) must be deducted from the gross lifting capacity to obtain a net lifting value.
4. Additional equipment on boom (e.g. boom walkways, auxiliary jib) must be deducted to get the net lifting capacity.
5. For max. wind speed please refer to lift chart in operator's cab or manual.
6. Working radii are measured from centre of swing and under load.
7. The lifting capacities are valid for 360 degrees of swing.
8. Calculation of stability under load is based on DIN 15019 / part 2 / chart 1 and ISO 4305 Table 1 + 2, tipping angle 4°.
9. The structures are calculated according to F.E.M. 1.001 - 1998 (EN 13001-1; EN 13001-2).

Transport dimensions and weights

Basic machine and main boom (No. 2017.xx)



Basic machine

with A-frame, 2x 120 kN crane winches **without** boom foot, hoist ropes, basic counterweight and crawlers

Width	3000 mm
Weight	33400 kg
Weight of hoist rope (420 m)	3.428 kg/m

Crawler

Track pads	(option 1200) 1000 mm	2x
Width	1400 mm	
Weight	16000 kg	

Boom section (No. 2017.21)

Width	2100 mm	3 m
Weight* incl. main boom pendants	570 kg	
Weight* incl. main boom and luffing jib pendants	640 kg	

Boom section (No. 2017.21)

Width	2100 mm	6 m
Weight* incl. main boom pendants	930 kg	
Weight* incl. main boom and luffing jib pendants	1016 kg	

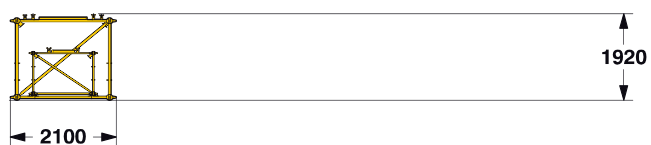
Boom section (No. 2017.21)

Width	2100 mm	12 m
Weight* incl. main boom pendants	1655 kg	
Weight* incl. main boom and luffing jib pendants	1870 kg	

Boom head (No. 2017.21)

Width	2100 mm
Weight* incl. main boom pendants	3000 kg

Transport option



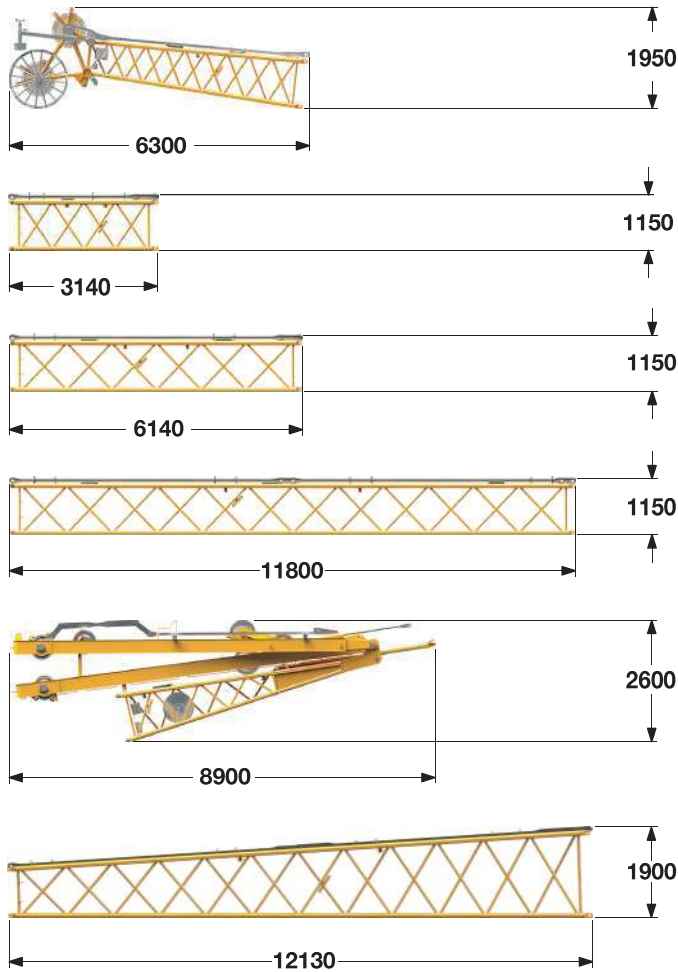
Boom transport option

(No. 2017.xx/1309.xx)	6/6	12/11.7	m
Length	6130	12130	mm
Weight*	1580	2830	kg

*) Weights depend on the equipment installed

Transport dimensions and weights

Luffing jib (No. 1309.xx)



Luffing jib head (No. 1309.22)

Width	1390 mm
Weight*	1125 kg

Luffing jib section (No. 1309.20) 3 m

Width	1390 mm
Weight*	305 kg

Luffing jib section (No. 1309.20) 6 m

Width	1390 mm
Weight*	510 kg

Luffing jib section (No. 1309.20) 11.7 m

Width	1390 mm
Weight*	945 kg

Luffing jib foot with A-frames (No. 1309.22)

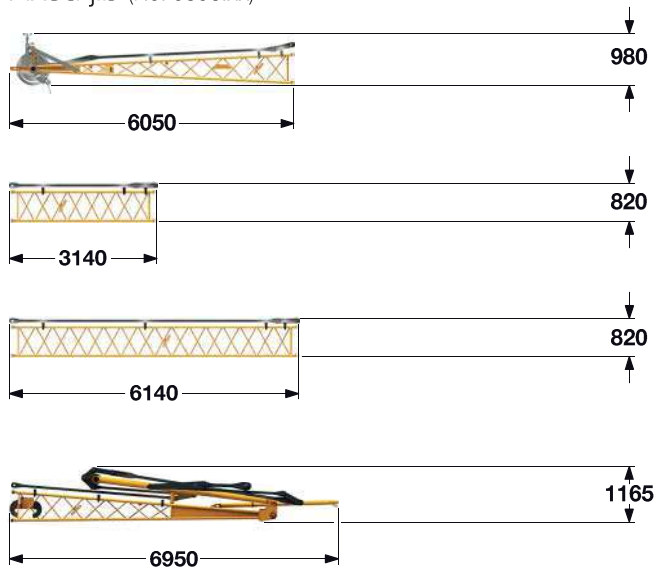
Width	1700 mm
Weight*	4525 kg

L-boom section tapered (No. 2017/1309.20) 12 m

Width	2100 mm
Weight*	1060 kg

*) Including pendants

Fixed jib (No. 0806.xx)



Fixed jib head (No. 0806.16)

Width	950 mm
Weight*	445 kg

Fixed jib section (No. 0806.15) 3 m

Width	950 mm
Weight*	145 kg

Fixed jib section (No. 0806.15) 6 m

Width	950 mm
Weight*	250 kg

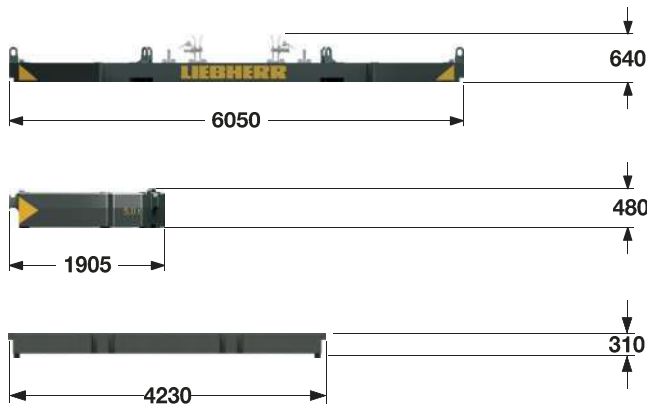
Fixed jib foot with A-frame (No. 0806.16)

Width	2200 mm
Weight*	1115 kg

*) Including pendants

Transport dimensions and weights

Counterweights



Counterweight 1x

Width	1360 mm
Weight	12000 kg

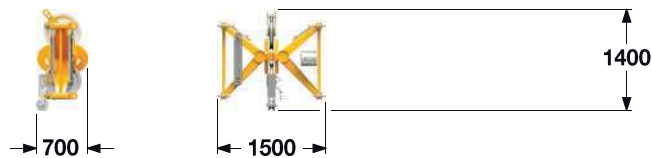
Counterweight 8x

Width	1350 mm
Weight	5000 kg

Carbody counterweight 2x

Width	1435 mm
Weight	10000 kg

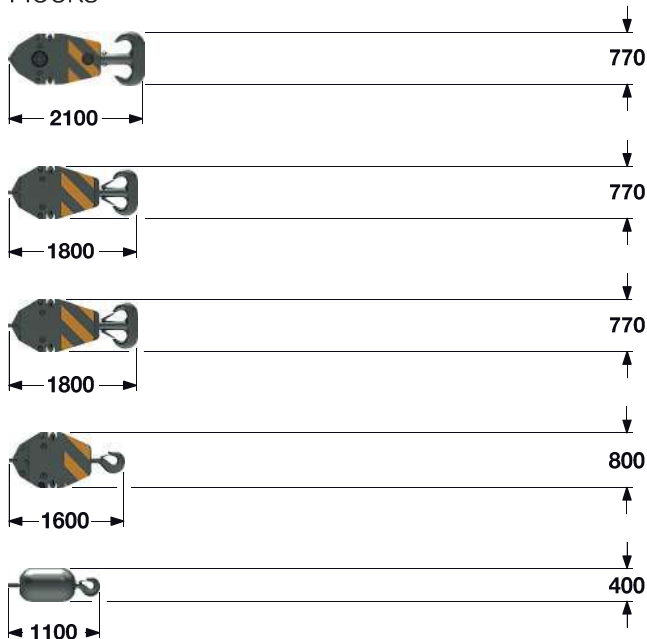
Mid fall (option)



Mid fall section (No. 1309.32) 0.35 m

Width	700 mm
Weight	270 kg

Hooks



160 t hook block - 7 sheaves

Width	640	760	880 mm
Weight	1500	2250	3000 kg

100 t hook block - 5 sheaves

Width	540	670	770 mm
Weight	1300	1800	2300 kg

80 t hook block - 3 sheaves

Width	360	460	560 mm
Weight	1000	1500	2000 kg

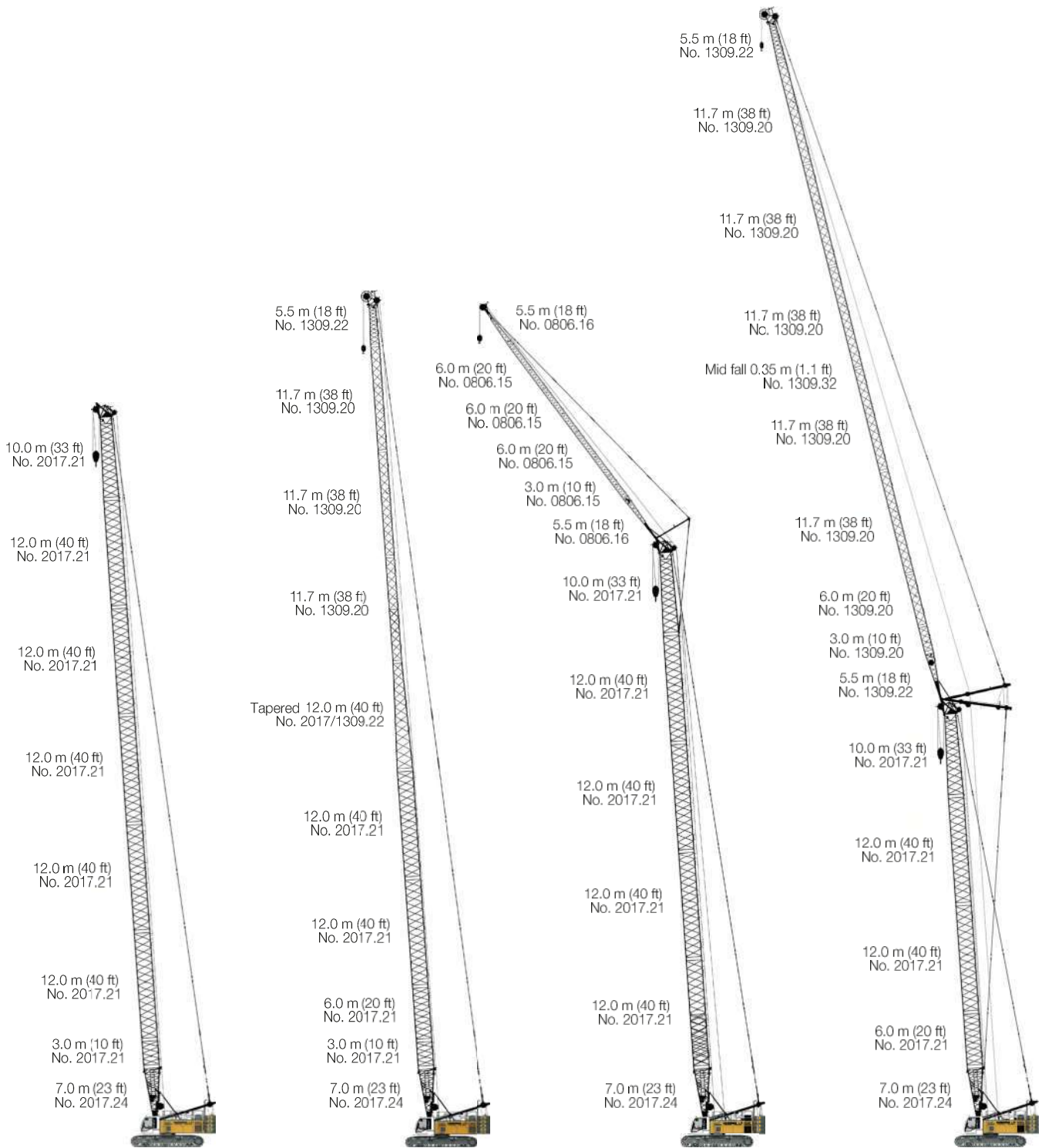
40 t hook block - 1 sheave

Width	300	400	500 mm
Weight	700	1100	1500 kg

12.5 t single hook

Width	400 mm
Weight	600 kg

Boom combinations



Main boom No. 2017.xx — 80 m

Max. combination	— 92.6 m	92.9 m
Main boom		
No. 2017.xx	— 40.0 m	52.0 m
Tapered		
No. 2017/1309.xx	— 12.0 m	12.0 m
Luffing jib		
No. 1309.xx	— 40.6 m	28.9 m

Max. combination	— 97 m
Main boom No. 2017.xx	— 65 m
Fixed jib	
No. 0806.xx	— 32 m
Main boom No. 2017.xx	— 68 m
Fixed jib	
No. 0806.xx	— 29 m

Max. combination	— 125.5 m
Main boom No. 2017.xx	— 47.0 m
Luffing jib	
No. 1309.xx	— 78.5 m
Main boom No. 2017.xx	— 53.0 m
Luffing jib	
No. 1309.xx	— 49.1 m

Technical description



Engine

Power rating according to ISO 9249, 230 kW (308 hp) at 1700 rpm
Engine type ————— Liebherr D 944 A7 04
Fuel tank ————— 790 l capacity with continuous level indicator and reserve warning
Engine complies with NRMM exhaust certification EPA/CARB Tier 4f and 97/68 EC Stage IV.



Hydraulic system

A double axial displacement pump supplies the open loop hydraulic system, allowing all functions to be operated simultaneously. To minimize peak pressure an automatic working pressure cut-off is integrated in the pump. All filters are electronically monitored. The use of synthetic environmentally friendly (biodegradable) oils is possible.
Working pressure ————— max. 350 bar
Oil tank capacity ————— 650 l



Luffing jib winch

Line pull ————— max. 105 kN
Rope diameter ————— 20 mm
Jib luffing ————— 46 sec. from 15° to 78°



Boom winch

Line pull ————— max. 217 kN
Rope diameter ————— 24 mm
Boom up ————— 96 sec. from 15° to 86°



Crawlers

Propulsion through axial piston motor, hydraulically released spring loaded multi-disc brake, crawler tracks, hydraulic chain tensioning device.
Track pads ————— 1000 mm (Option: 1200 mm)
Drive speed ————— 0 – 2.1 km/h



Swing

Consists of rollerbearing with external teeth, swing drive with fixed axial piston hydraulic motor, spring loaded and hydraulically released multi-disc holding brake, planetary gearbox and pinion.
Both swing modes are possible – speed control or free swing.
A multi-disc holding brake acts automatically at zero swing motion. Swing speed from 0 – 3 rpm continuously variable.



Main winches

Line pull (7th layer) ————— 120 kN
Rope diameter ————— 26 mm
Drum diameter ————— 580 mm
Rope speed ————— 0 – 136 m/min
Rope capacity in 7 layers ————— 489 m
The winches are outstanding in their compact design and easy assembly. Propulsion is via a planetary gearbox in an oil bath.
Load support by the hydraulic system; additional safety factor provided by a spring loaded, multi-disc holding brake. The main winches use pressure controlled, variable flow hydraulic motors. This system features sensors that automatically adjust oil flow to provide max. winch speed depending on load.

Option – winch with free fall system:
Clutch and braking functions on the free fall system are provided by a compact designed, low wear and maintenance free multi-disc brake.



Control

The heart of the hydraulic crawler cranes is the Liebherr control system which has been developed and manufactured in house. It includes all control and monitoring functions and is designed to withstand extreme environmental conditions and heavy duty construction tasks. Complete machine operating data as well as warning signals and irregularities are clearly displayed on the high resolution monitor in the operator's cab in the required language.
The electro hydraulic proportional control allows several movements to be performed simultaneously. This ensures that all categories of loads can be positioned with utmost precision.

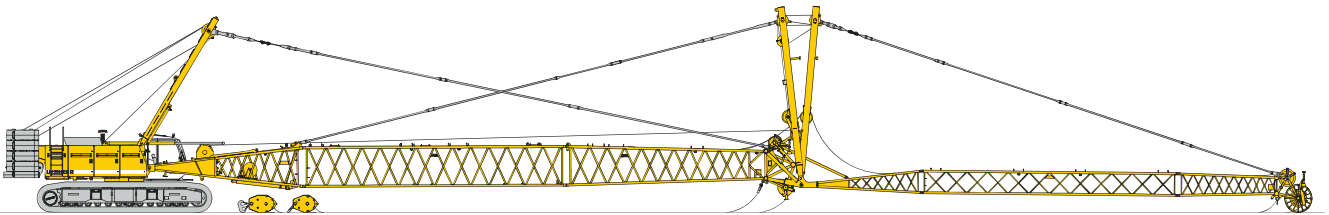
Option:
GSM/GPRS telematics module



Noise emission

Noise emissions correspond with 2000/14/EC directive.
Guaranteed sound pressure level L_{PA} in the cabin ————— ≤ 72.5 dB(A)
Guaranteed sound power level L_{WA} ————— ≤ 105 dB(A)
Vibration transmitted to the hand arm system of the machine operator ————— < 2.5 m/s²
Vibration transmitted to the whole body of the machine operator ————— < 0.5 m/s²

Erecting of main boom to working position



Reeving of hoist and luffing jib ropes

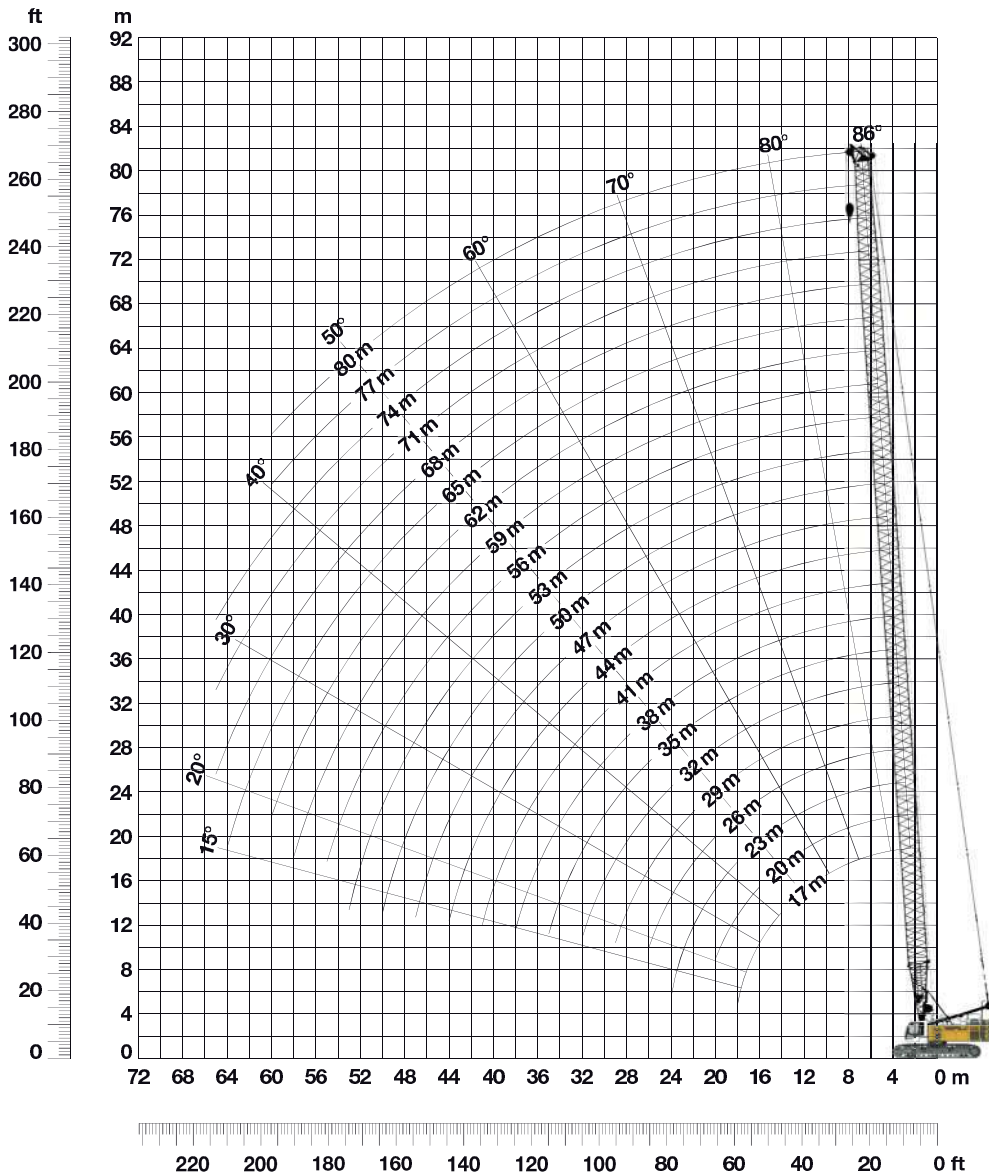


Erecting of main boom and luffing jib

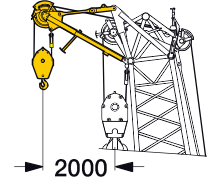
Working position

Main boom 86° - 15° (No. 2017.xx)

52.3 t counterweight and 20 t carbody counterweight



Auxiliary jib 24 t



The maximum capacity of the auxiliary jib is 24 t. The corresponding load chart is programmed in the LMI system.

Main boom configuration (Table 1 – No. 2017.xx)

Configuration for boom lengths between 17 m and 80 m

Length	7 m	Amount of boom extensions																						
		1	1	1	1	1	1	1	1	1	1	1	1	1	1	1	1	1	1	1	1			
Boom foot	7 m	1	1	1	1	1	1	1	1	1	1	1	1	1	1	1	1	1	1	1	1			
Boom insert	3 m		1		1		1		1		1		1		1		1		1		1			
Boom insert	6 m			1	1		1	1		1	1		1	1		1	1		1	1				
Boom insert	12 m					1	1	1	1		2	2	2	2	3	3	3	3	4	4	4	4	5	5
Boom head	10 m	1	1	1	1	1	1	1	1	1	1	1	1	1	1	1	1	1	1	1	1	1	1	
Boom length (m)		17	20	23	26	29	32	35	38	41	44	47	50	53	56	59	62	65	68	71	74	77	80	
Auxiliary jib applicable		✓	✓	✓	✓	✓	✓	✓	✓	✓	✓	✓	✓	✓	✓	✓	✓	✓	✓	✓	✓	✓	✓	

Lift chart for main boom (No. 2017.xx)

Counterweight 42.3 t 52.3 t and 20 t carbody counterweight

Capacities in metric tonnes for boom lengths (17 m - 80 m) with 120 kN winches

Radius (m)	Boom length in (m)																								Radius (m)	
	17		20		26		32		38		44		50		56		62		68		71		77			80
	t	t	t	t	t	t	t	t	t	t	t	t	t	t	t	t	t	t	t	t	t	t	t	t	t	t
3.4	137.2	137.2																								3.4
4	137.2	137.2	133.4	133.4																						4
5	116.5	116.5	114.2	114.2	107.7	107.7	97.3	97.3	79.9	79.9																5
6	98.6	98.6	97.4	97.4	92.5	92.5	88.0	88.0	75.0	75.0	62.0	62.0	52.7	52.7												6
7	85.7	85.7	83.6	83.6	81.2	81.2	76.5	76.5	69.2	69.2	56.9	56.9	50.3	50.3	44.9	44.9	36.7	36.7	29.1	29.1						7
8	75.0	75.0	74.2	74.2	71.2	71.2	67.7	68.4	62.5	62.5	53.0	53.0	47.5	47.5	42.9	42.9	35.6	35.6	28.9	28.9	26.5	26.5	21.8	18.9		8
9	66.8	66.8	66.0	66.0	62.9	63.6	59.4	61.3	56.1	57.6	49.1	49.1	44.7	44.7	41.5	41.5	34.3	34.3	27.7	27.7	25.5	25.5	21.4	18.8		9
10	58.0	60.5	58.1	59.5	55.7	57.8	52.8	55.3	50.1	52.8	46.2	46.2	42.0	42.0	39.5	39.5	33.2	33.2	26.7	26.7	24.6	24.6	20.6	18.0		10
12	44.7	50.3	44.7	49.9	44.7	48.1	43.0	46.7	41.1	44.2	39.2	40.2	37.5	37.9	35.8	36.4	30.6	30.6	24.7	24.7	22.9	22.9	19.4	16.9		12
14	36.1	41.3	36.1	41.4	36.1	41.3	36.0	39.8	34.6	38.3	33.2	35.2	31.7	32.9	30.4	32.6	28.8	28.8	23.1	23.1	21.3	21.3	18.1	15.6		14
16	30.0	34.5	30.1	34.6	30.0	34.5	29.9	34.4	29.7	33.4	28.5	31.4	27.4	29.1	26.2	28.4	25.1	25.7	21.6	21.6	20.1	20.1	17.2	14.7		16
18	12.1	12.1	25.6	29.5	25.6	29.5	25.5	29.4	25.3	29.2	24.9	27.9	23.9	26.2	23.0	25.3	22.0	23.2	19.9	19.9	18.6	18.6	16.2	13.8		18
20			22.1	25.6	22.2	25.6	22.1	25.5	21.8	25.3	21.6	25.1	21.1	23.6	20.3	22.8	19.4	21.2	18.6	18.6	17.4	17.4	15.2	12.9		20
22					19.4	22.5	19.3	22.4	19.1	22.2	18.9	22.0	18.7	21.5	18.1	20.5	17.3	19.3	16.5	17.5	16.1	16.4	14.3	12.0		22
24					17.2	20.0	17.1	19.9	16.9	19.7	16.7	19.5	16.4	19.2	16.2	18.7	15.4	17.6	14.8	16.1	14.4	15.4	13.6	11.4		24
26					15.3	17.9	15.3	17.8	15.1	17.6	14.9	17.4	14.6	17.2	14.4	16.9	13.9	16.1	13.2	14.8	12.9	14.2	12.8	10.8		26
28							13.7	16.1	13.5	15.9	13.3	15.7	13.1	15.4	12.8	15.2	12.5	14.8	11.9	13.6	11.5	13.1	11.9	10.2		28
30							12.4	14.6	12.2	14.4	12.0	14.2	11.8	13.9	11.5	13.7	11.3	13.4	10.7	12.6	10.4	12.2	11.1	9.6		30
32							11.3	13.2	11.1	13.1	10.9	12.9	10.6	12.6	10.4	12.4	10.1	12.1	9.7	11.8	9.4	11.4	10.4	9.1		32
34									10.1	12.0	9.9	11.8	9.6	11.5	9.4	11.2	9.1	10.9	8.8	10.7	8.5	10.5	9.8	8.7		34
36									9.2	11.0	9.0	10.8	8.8	10.5	8.5	10.3	8.2	9.9	7.9	9.7	7.7	9.5	9.0	8.3		36
38									8.4	10.1	8.2	9.9	8.0	9.7	7.7	9.4	7.4	9.1	7.2	8.8	7.0	8.6	8.2	7.8		38
40											7.5	9.1	7.3	8.9	7.0	8.6	6.7	8.3	6.5	8.0	6.3	7.8	7.4	7.1		40
42											6.9	8.4	6.6	8.2	6.4	7.9	6.1	7.6	5.8	7.3	5.7	7.1	6.8	6.5		42
44											6.3	7.7	6.1	7.5	5.8	7.3	5.5	7.0	5.3	6.7	5.1	6.5	6.2	5.9		44
46													5.5	6.9	5.3	6.7	5.0	6.4	4.7	6.1	4.6	6.0	5.6	5.4		46
48													5.1	6.4	4.8	6.1	4.5	5.8	4.3	5.6	4.1	5.4	5.1	4.9		48
50													4.6	5.9	4.4	5.6	4.1	5.4	3.8	5.1	3.7	4.9	4.6	4.4		50
55															3.4	4.6	3.1	4.3	2.9	4.0	2.7	3.9	3.6	3.4		55
60																	2.3	3.4	2.1	3.1		3.0	2.7	2.5		60
65																			2.4			2.2				65

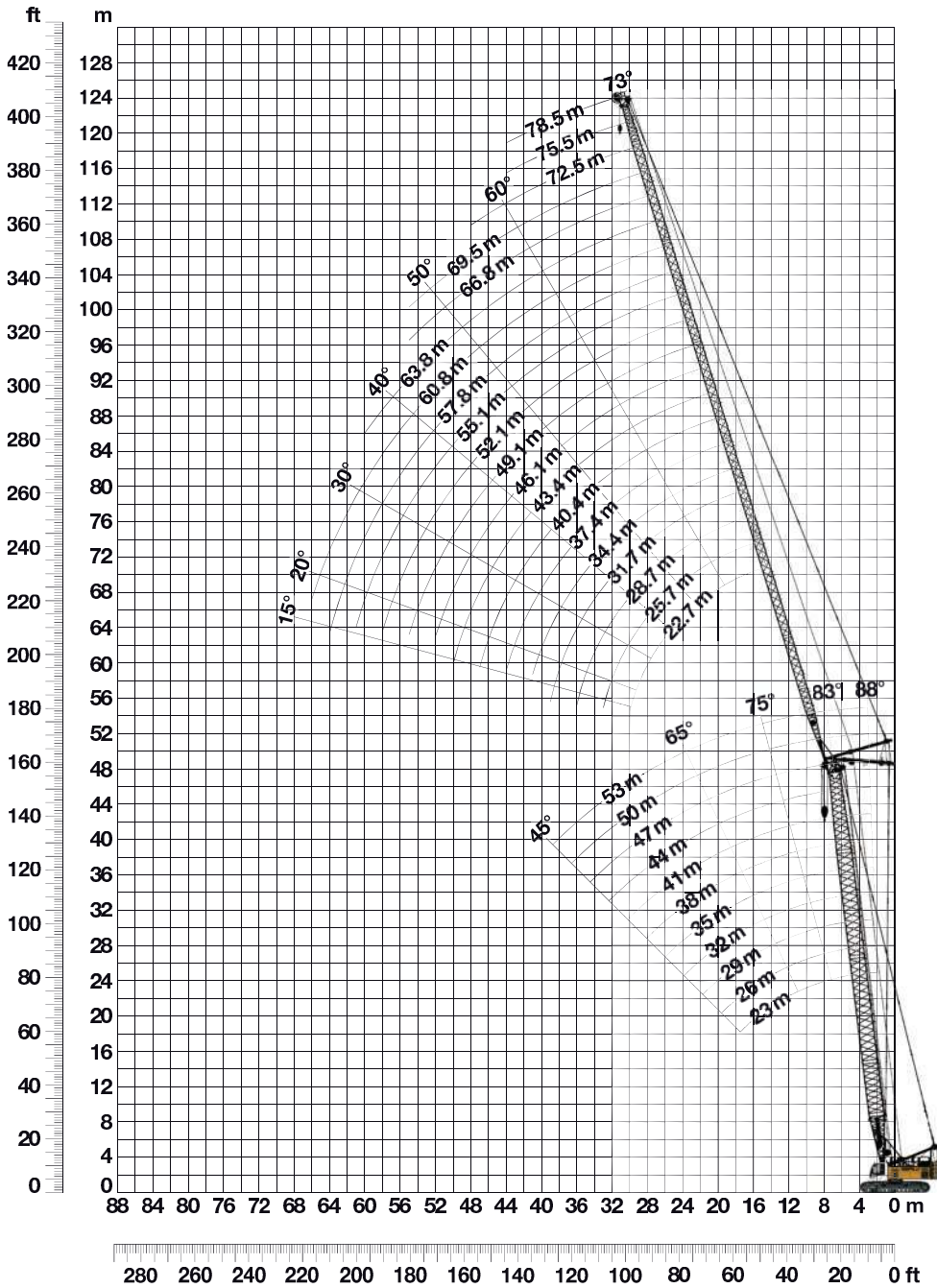
TLT 10576238 M188886 Offiziell

Above load charts are for reference only.

For actual lift duty and complete chart with all available configurations please refer to load chart in operator's cab or manual.

Working range - luffing jib 78° - 15° (No. 1309.xx)

Main boom 88° - 45°



Boom configuration for main boom lengths (23 m - 53 m) (see table 1 on page 10)

Jib configuration for jib lengths (22.7 m - 78.5 m)

	Length	Amount of luffing jib extensions																			
		1	1	1	1	1	1	1	1	1	1	1	1	1	1	1	1	1	1		
Luffing jib foot	5.5 m	1	1	1	1	1	1	1	1	1	1	1	1	1	1	1	1	1	1		
Luffing jib insert	3.0 m		1		1		1		1		1		1		1		1		1		
Luffing jib insert	6.0 m			1	1		1		1		1		1		1		1		1		
Luffing jib insert	11.7 m	1	1	1	1	2	2	2	2	3	3	3	3	4	4	4	4	5	5	5	5
Luffing jib head	5.5 m	1	1	1	1	1	1	1	1	1	1	1	1	1	1	1	1	1	1	1	1
Luffing jib length (m)		22.7	25.7	28.7	31.7	34.4	37.4	40.4	43.4	46.1	49.1	52.1	55.1	57.8	60.8	63.8	66.8	69.5	72.5	75.5	78.5

Lift chart - luffing jib (No. 1309.xx)

Main boom 88°

TLT 10576238 M188886 Offtziell

Main boom 23 m

Radius (m)	Jib length in (m)							
	22.7 t	28.7 t	34.4 t	40.4 t	49.1 t	60.8 t	69.5 t	78.5 t
8.2	43.3							
10	38.5	33.8						
11	35.5	31.9	26.3					
12	33.2	29.9	25.6	20.3				
14	29.2	26.4	23.5	19.5	13.3			
17	24.2	22.3	20.1	17.7	12.4	8.4		
18	23.0	21.1	19.1	17.2	12.1	8.2	5.8	
20	20.6	19.1	17.5	15.7	11.5	7.9	5.6	3.6
22	18.8	17.6	16.0	14.6	11.0	7.5	5.4	3.5
24	17.2	16.2	14.7	13.6	10.4	7.3	5.2	3.3
30		13.1	12.0	11.4	9.2	6.7	4.8	2.9
36			10.3	9.9	8.2	6.2	4.5	2.6
42				7.9	7.1	5.9	4.2	2.4
50					5.6	4.9	3.8	2.1
55						4.4	3.6	2.0
60						3.8	3.4	

Main boom 32 m

Radius (m)	Jib length in (m)							
	22.7 t	28.7 t	34.4 t	40.4 t	49.1 t	60.8 t	69.5 t	78.5 t
8.5	36.1							
10	33.6	28.8						
11	31.3	27.5	23.2					
13	27.7	24.6	21.8	17.8				
15	24.8	22.2	19.8	17.0	12.2			
17	22.2	20.2	18.2	15.7	11.7	7.9		
19	20.1	18.2	16.7	14.6	11.1	7.6	5.5	
22	17.0	15.9	14.6	13.0	10.4	7.2	5.2	3.3
24	15.4	14.3	13.3	12.1	9.9	6.9	5.0	3.2
28		12.0	11.4	10.5	9.1	6.6	4.7	2.9
30		11.2	10.5	9.9	8.6	6.4	4.6	2.8
36			8.7	7.9	7.5	5.9	4.3	2.5
42				6.6	6.1	5.5	4.0	2.3
50					4.9	4.2	3.5	2.1
60						3.1	2.6	
65							2.2	

Main boom 38 m

Radius (m)	Jib length in (m)							
	22.7 t	28.7 t	34.4 t	40.4 t	49.1 t	60.8 t	69.5 t	78.5 t
8.8	31.5							
10	29.8	25.4						
12	26.5	23.5	20.5					
13	24.8	22.1	19.6	16.4				
15	22.3	20.0	17.9	15.4	11.4			
17	19.9	18.2	16.5	14.2	10.9	7.5		
19	18.0	16.5	15.1	13.2	10.4	7.2	5.2	
22	15.2	14.4	13.4	11.7	9.7	6.8	5.0	3.2
24	14.0	13.2	12.3	10.9	9.2	6.6	4.8	3.1
28		11.3	10.6	9.6	8.4	6.3	4.6	2.8
30		10.7	9.9	9.1	8.0	6.1	4.4	2.7
34			8.8	7.9	7.3	5.8	4.2	2.5
36			8.3	7.4	6.9	5.5	4.1	2.5
42				6.3	5.7	5.0	3.8	2.3
50					4.6	3.8	3.3	2.0
60						2.9	2.3	

Main boom 47 m

Radius (m)	Jib length in (m)							
	22.7 t	28.7 t	34.4 t	40.4 t	49.1 t	60.8 t	69.5 t	78.5 t
9.1	25.0							
11	22.7	20.1						
12	21.4	19.0	16.7					
13	20.2	18.0	15.9	13.6				
15	18.1	16.3	14.4	12.7	10.0			
18	15.4	14.3	12.5	11.2	9.3	6.6		
19	14.8	13.6	11.9	10.8	8.9	6.5	4.8	
22	13.2	11.9	10.6	9.6	8.2	6.1	4.6	3.0
26	9.8	10.5	9.3	8.5	7.3	5.6	4.3	2.8
32		7.1	8.0	7.3	6.3	5.0	3.9	2.5
36			7.2	6.6	5.8	4.6	3.7	2.3
42				5.7	4.9	4.0	3.2	2.1
44					4.7	3.9	3.0	2.0
50					4.1	3.2	2.6	
55						2.8	2.2	
60						2.4		

Main boom 50 m

Radius (m)	Jib length in (m)						
	22.7 t	28.7 t	34.4 t	40.4 t	49.1 t	60.8 t	69.5 t
9.2	22.8						
11	20.9	18.4					
12	19.6	17.4	15.3				
13	18.6	16.4	14.6	12.5			
15	16.7	14.8	13.2	11.7	9.3		
18	14.4	12.8	11.5	10.4	8.7	6.3	
19	13.8	12.1	11.0	10.0	8.3	6.2	4.6
20	13.3	11.5	10.6	9.6	8.0	6.0	4.6
22	12.4	10.6	9.8	8.8	7.5	5.7	4.4
24	11.7	10.0	9.1	8.3	7.1	5.4	4.2
26	8.9	9.5	8.6	7.8	6.7	5.2	4.0
32		7.0	7.6	6.8	5.8	4.5	3.6
36			6.9	6.3	5.4	4.2	3.3
42				5.5	4.6	3.7	2.9
50					3.9	2.9	2.4
60						2.2	

Main boom 53 m

Radius (m)	Jib length in (m)							
	22.7 t	25.7 t	28.7 t	31.7 t	34.4 t	37.4 t	40.4 t	49.1 t
9.3	20.8							
10	20.4	18.6						
11	19.2	17.8	16.9					
12	18.1	16.9	15.9	15.0	14.0			
13	17.1	15.9	15.1	14.2	13.4	12.5	11.4	
15	15.5	14.2	13.6	12.9	12.2	11.5	10.8	8.7
18	13.3	12.3	11.8	11.1	10.7	10.1	9.6	8.0
20	12.3	11.2	10.7	10.3	9.8	9.2	8.8	7.4
26	10.1	9.3	8.8	8.4	8.0	7.6	7.2	6.2
28		8.8	8.4	8.0	7.6	7.2	6.8	5.9
32			6.5	7.4	7.0	6.6	6.3	5.3
34				7.0	6.8	6.4	6.0	5.1
36					6.5	6.1	5.8	4.9
40						4.8	5.4	4.5
42							5.1	4.3
50								3.6

Capacities in metric tonnes with luffing jib (No. 1309.xx), 52.3 t counterweight + 20 t carbody counterweight. Above lift chart is for reference only. For actual lift duty and complete chart with all available configurations please refer to lift chart in operator's cab or manual.

Lift chart - luffing jib (No. 1309.xx)

Main boom 83°

TLT 10576238 M188886 Offiziell

Main boom 23 m

Radius (m)	Jib length in (m)							
	22.7 t	28.7 t	34.4 t	40.4 t	49.1 t	60.8 t	69.5 t	78.5 t
12.2	37.6							
14	33.7	30.2						
16	29.1	27.1	24.0					
18	25.5	23.9	22.1	18.3				
20	22.9	21.5	19.8	17.5	11.8			
24	18.7	17.9	16.5	15.1	10.9	7.5		
26	17.4	16.5	15.2	14.2	10.6	7.2	5.1	
30		14.5	13.3	12.6	9.9	6.9	4.9	3.0
32		13.7	12.5	11.9	9.5	6.7	4.8	2.9
36			11.4	10.6	8.9	6.4	4.6	2.7
38			10.9	10.1	8.5	6.3	4.5	2.6
44				8.8	7.6	6.0	4.2	2.4
50					6.7	5.5	3.9	2.2
55						5.1	3.7	2.1
60						4.6	3.5	
70							3.1	

Main boom 32 m

Radius (m)	Jib length in (m)							
	22.7 t	28.7 t	34.4 t	40.4 t	49.1 t	60.8 t	69.5 t	78.5 t
13.3	30.6							
15	28.1	24.7						
17	25.2	22.8	20.2					
19	22.5	20.5	18.7	15.9				
22	19.5	17.7	16.4	14.5	10.9			
26	16.6	15.2	14.1	12.7	10.0	7.0		
28	15.4	14.3	13.3	11.9	9.7	6.8	4.9	
30		13.5	12.6	11.3	9.4	6.7	4.7	2.9
34		11.3	11.3	10.2	8.7	6.4	4.5	2.7
38			10.1	9.2	8.2	6.1	4.3	2.5
40				8.8	7.8	6.0	4.2	2.5
44				7.7	7.2	5.7	4.0	2.3
50					6.2	5.2	3.8	2.1
55						4.8	3.6	2.0
65						3.4	3.0	
70							2.6	

Main boom 38 m

Radius (m)	Jib length in (m)							
	22.7 t	28.7 t	34.4 t	40.4 t	49.1 t	60.8 t	69.5 t	78.5 t
14	24.9							
16	22.6	20.3						
18	20.2	18.5	16.8					
20	18.1	16.7	15.4	13.5				
22	16.5	15.3	14.1	12.4	10.0			
26	14.2	13.1	12.2	10.8	9.1	6.6		
28	13.4	12.4	11.5	10.2	8.7	6.5	4.7	
32		11.2	10.4	9.3	8.1	6.1	4.5	2.8
34		10.6	9.9	8.8	7.7	5.9	4.4	2.7
36			9.5	8.4	7.4	5.8	4.3	2.6
40			8.6	7.7	6.8	5.4	4.1	2.4
42				7.4	6.5	5.2	3.9	2.3
46				6.3	6.0	4.9	3.7	2.2
50					5.5	4.5	3.5	2.1
65						3.1	2.6	
70							2.2	

Main boom 47 m

Radius (m)	Jib length in (m)							
	22.7 t	28.7 t	34.4 t	40.4 t	49.1 t	60.8 t	69.5 t	78.5 t
15.1	18.3							
17	16.8	15.1						
19	15.1	13.9	12.2					
22	13.1	12.1	10.7	9.8				
24	12.2	11.1	9.8	9.0	7.7			
28	10.9	9.9	8.7	8.0	6.9	5.3		
30	10.3	9.4	8.3	7.5	6.5	5.1	4.1	
32		9.1	7.9	7.2	6.3	4.9	3.9	2.6
34		8.6	7.6	6.9	5.9	4.6	3.7	2.6
36		7.4	7.3	6.6	5.7	4.4	3.5	2.5
40			6.7	6.1	5.2	4.0	3.2	2.3
44				5.7	4.8	3.7	2.9	2.0
46				5.4	4.6	3.5	2.8	
48					4.5	3.4	2.6	
55					3.8	2.9	2.2	
65						2.3		

Main boom 50 m

Radius (m)	Jib length in (m)							
	22.7 t	28.7 t	34.4 t	40.4 t	49.1 t	55.1 t	60.8 t	69.5 t
15.5	16.4							
18	14.6	13.0						
19	13.9	12.3	11.0					
22	12.0	10.7	9.8	8.9				
24	11.3	9.8	9.0	8.2	7.0			
26	10.7	9.1	8.5	7.7	6.6	5.8		
28	10.2	8.7	7.9	7.3	6.2	5.5	4.8	
30	9.6	8.3	7.6	6.9	5.9	5.3	4.6	3.6
36		6.8	6.7	6.0	5.1	4.6	4.0	3.1
38			6.5	5.8	4.9	4.3	3.8	3.0
42			5.4	5.4	4.5	3.9	3.4	2.7
46				5.0	4.2	3.6	3.1	2.4
50					3.9	3.3	2.8	2.1
55					3.5	3.0	2.5	
60						2.7	2.3	
65							2.0	

Main boom 53 m

Radius (m)	Jib length in (m)							
	22.7 t	25.7 t	28.7 t	31.7 t	34.4 t	37.4 t	40.4 t	49.1 t
15.9	14.8							
17	14.2	13.0						
18	13.5	12.4	11.8					
19	12.8	11.8	11.2	10.7				
20	12.2	11.1	10.7	10.2	9.8			
22	11.1	10.2	9.7	9.3	9.0	8.5	8.1	
24	10.4	9.4	9.0	8.6	8.2	7.8	7.5	6.3
28	9.4	8.4	8.0	7.6	7.3	6.9	6.6	5.7
30	8.9	8.1	7.7	7.2	6.9	6.5	6.2	5.3
32		7.7	7.4	7.0	6.6	6.2	5.9	5.1
36			6.7	6.5	6.2	5.8	5.5	4.6
38				6.2	5.9	5.6	5.3	4.4
42					4.9	5.2	4.9	4.0
44						4.9	4.7	3.9
48							3.8	3.6
55								3.1

Capacities in metric tonnes with luffing jib (No. 1309.xx), 52.3 t counterweight + 20 t carbody counterweight. Above lift chart is for reference only. For actual lift duty and complete chart with all available configurations please refer to lift chart in operator's cab or manual.

Lift chart - luffing jib (No. 1309.xx)

Main boom 75°

TLT 10576238 M188886 Offtziell

Main boom 23 m

Radius (m)	Jib length in (m)							
	22.7 t	28.7 t	34.4 t	40.4 t	49.1 t	60.8 t	69.5 t	78.5 t
18.3	27.9							
22	23.3	22.7						
24	21.0	20.8	19.7					
26	19.0	18.8	17.9	16.2				
30	15.9	15.8	15.3	14.8	10.3			
36		12.5	12.4	12.1	9.5	6.6		
40			10.8	10.6	9.0	6.4	4.5	
42				10.0	8.6	6.2	4.4	2.5
44				9.4	8.3	6.1	4.3	2.5
46				8.8	8.0	6.0	4.2	2.4
48					7.8	5.9	4.1	2.3
50					7.4	5.8	4.0	2.3
55					6.6	5.5	3.8	2.1
60						5.1	3.6	
65						4.5	3.5	
75							3.1	

Main boom 32 m

Radius (m)	Jib length in (m)							
	22.7 t	28.7 t	34.4 t	40.4 t	49.1 t	60.8 t	69.5 t	78.5 t
20.7	21.8							
24	19.0	17.8						
26	17.6	16.5	15.6					
30	15.3	14.3	13.7	12.6				
32	14.1	13.5	12.9	11.9	9.5			
38		11.2	10.9	10.0	8.8	6.3		
42			9.7	9.0	8.1	6.1	4.3	
44			9.1	8.6	7.8	5.9	4.2	
46				8.3	7.5	5.8	4.1	2.4
48				7.9	7.2	5.7	4.0	2.3
50				7.3	6.9	5.6	3.9	2.2
55					6.2	5.2	3.8	2.1
60						4.8	3.6	
65						4.4	3.4	
70							3.2	
75							3.0	

Main boom 38 m

Radius (m)	Jib length in (m)							
	22.7 t	28.7 t	34.4 t	40.4 t	49.1 t	60.8 t	69.5 t	78.5 t
22.2	17.4							
26	15.0	14.1						
28	14.0	13.2	12.4					
30	13.1	12.4	11.7	10.3				
34	12.0	11.1	10.5	9.4	8.2			
40		9.7	9.0	8.1	7.2	5.5		
42			8.7	7.7	6.9	5.4	3.9	
44			8.3	7.4	6.7	5.3	3.9	
46				7.1	6.4	5.2	3.8	2.3
48				6.9	6.1	5.0	3.7	2.3
50				6.6	5.9	4.8	3.7	2.2
55					5.3	4.4	3.4	2.1
60					4.5	3.9	3.1	
65						3.6	2.8	
70						3.2	2.6	
75							2.3	

Main boom 47 m

Radius (m)	Jib length in (m)							
	22.7 t	28.7 t	34.4 t	40.4 t	49.1 t	60.8 t	69.5 t	78.5 t
24.6	11.9							
28	10.7	10.0						
30	10.1	9.4	8.4					
32	9.5	8.8	7.9	7.2				
34	9.1	8.3	7.5	6.9				
36	8.7	7.9	7.1	6.6	5.7			
38		7.5	6.7	6.2	5.4			
40		7.3	6.4	5.9	5.2			
42		7.0	6.1	5.6	4.9	3.9		
44			5.9	5.3	4.7	3.7		
46			5.7	5.1	4.5	3.5	2.8	
48			5.0	4.9	4.3	3.4	2.7	
50				4.8	4.0	3.2	2.5	
55					3.6	2.8	2.1	
60					3.3	2.4		
65						2.1		

Main boom 50 m

Radius (m)	Jib length in (m)							
	22.7 t	28.7 t	34.4 t	40.4 t	49.1 t	55.1 t	60.8 t	69.5 t
25.3	10.3							
28	9.6	8.4						
30	9.0	7.9						
32	8.5	7.5	6.9					
34	8.0	7.1	6.5	6.0				
36	7.8	6.7	6.2	5.7				
38		6.3	5.9	5.4	4.7			
40		6.1	5.6	5.1	4.4	4.0		
42		5.9	5.3	4.9	4.2	3.8	3.2	
44			5.1	4.6	4.0	3.6	3.1	
46			5.0	4.4	3.8	3.4	2.9	2.2
48			4.8	4.2	3.6	3.2	2.8	2.1
50				4.1	3.4	3.0	2.6	
55					3.0	2.6	2.2	
60					2.8	2.3		
65						2.1		

Main boom 53 m

Radius (m)	Jib length in (m)							
	22.7 t	25.7 t	28.7 t	31.7 t	34.4 t	37.4 t	40.4 t	49.1 t
26.1	9.0							
28	8.5	7.8						
30	8.0	7.3	7.0	6.6				
32	7.5	6.8	6.6	6.3	6.1			
34	7.1	6.5	6.2	5.9	5.7	5.5	5.1	
36	6.9	6.1	5.9	5.6	5.4	5.1	4.9	
38	6.7	5.9	5.6	5.3	5.1	4.8	4.6	3.9
40		5.7	5.4	5.1	4.9	4.6	4.4	3.7
42			5.2	4.8	4.6	4.4	4.2	3.5
44			4.5	4.7	4.4	4.1	4.0	3.3
46				4.6	4.3	4.0	3.8	3.1
48					4.2	3.9	3.6	3.0
50						3.7	3.5	2.8
55							2.9	2.5
60								2.3

Capacities in metric tonnes with luffing jib (No. 1309.xx), 52.3 t counterweight + 20 t carbody counterweight. Above lift chart is for reference only. For actual lift duty and complete chart with all available configurations please refer to lift chart in operator's cab or manual.

Lift chart - luffing jib (No. 1309.xx)

Main boom 65°

TLT 10576238 M188886 Offziell

Main boom 23 m

Radius (m)	Jib length in (m)							
	22.7 t	28.7 t	34.4 t	40.4 t	49.1 t	60.8 t	69.5 t	78.5 t
25.6	18.3							
28	16.3							
30	15.0	14.7						
32	13.8	13.6						
34	12.8	12.6	12.4					
36		11.7	11.6	11.3				
40		10.2	10.1	9.8				
42			9.5	9.2	8.7			
44			8.9	8.7	8.3			
48				7.7	7.3	6.0		
50				7.3	6.9	5.9		
55					6.0	5.6	3.9	
60						4.8	3.8	2.0
65						4.2	3.6	
70						3.6	3.3	
75							2.9	

Main boom 32 m

Radius (m)	Jib length in (m)							
	22.7 t	28.7 t	34.4 t	40.4 t	49.1 t	60.8 t	69.5 t	
29.4	14.3							
32	12.8							
34	11.9	11.6						
36	11.1	10.8	10.6					
38	10.3	10.1	9.9					
40		9.4	9.2	8.9				
42		8.8	8.6	8.4				
44		8.3	8.1	7.9				
46			7.6	7.4	7.0			
48			7.2	7.0	6.6			
50				6.6	6.2			
55				5.7	5.3	4.9		
60					4.7	4.2	3.6	
65						3.6	3.2	
70						3.1	2.8	
75						2.7	2.4	

Main boom 38 m

Radius (m)	Jib length in (m)						
	22.7 t	28.7 t	34.4 t	40.4 t	49.1 t	60.8 t	69.5 t
31.9	12.1						
34	11.2						
36	10.4	10.1					
38	9.7	9.4					
40	9.0	8.8	8.6				
42		8.3	8.0	7.7			
44		7.7	7.5	7.2			
46		7.3	7.1	6.8			
48			6.7	6.4	5.9		
50			6.3	6.0	5.6		
55				5.2	4.8	4.2	
60					4.2	3.6	3.1
65					3.6	3.1	2.6
70						2.7	2.2
75						2.3	

Main boom 47 m

Radius (m)	Jib length in (m)					
	22.7 t	28.7 t	34.4 t	40.4 t	49.1 t	60.8 t
35.7	9.2					
36	9.1					
38	8.6					
40	8.0	7.6				
42	7.5	7.2				
44	7.1	6.8	6.4			
46		6.4	6.0	5.6		
48		6.0	5.7	5.3		
50		5.7	5.4	5.0		
55			4.7	4.4	3.8	
60				3.9	3.3	2.6
65					2.9	2.2
70					2.5	

Main boom 50 m

Radius (m)	Jib length in (m)					
	22.7 t	28.7 t	34.4 t	40.4 t	49.1 t	60.8 t
37	8.3					
40	7.6					
42	7.1	6.7				
44	6.7	6.3	5.9			
46		6.0	5.6			
48		5.6	5.3	4.8		
50		5.3	5.0	4.6		
55			4.4	4.0	3.4	
60				3.5	2.9	2.2
65					2.5	
70					2.2	

Main boom 53 m

Radius (m)	Jib length in (m)							
	22.7 t	25.7 t	28.7 t	31.7 t	34.4 t	37.4 t	40.4 t	49.1 t
38.2	7.4							
40	7.1	6.5						
42	6.7	6.2	6.0					
44	6.3	6.0	5.7	5.4				
46	5.9	5.7	5.5	5.2	5.0			
48		5.4	5.2	5.0	4.8	4.5		
50		5.0	4.9	4.7	4.6	4.3	4.1	
55				4.1	4.0	3.8	3.6	3.0
60						3.3	3.1	2.6
65								2.2

Capacities in metric tonnes with luffing jib (No. 1309.xx), 52.3 t counterweight + 20 t carbody counterweight. Above lift chart is for reference only. For actual lift duty and complete chart with all available configurations please refer to lift chart in operator's cab or manual.

Lift chart - luffing jib (No. 1309.xx)

Main boom 45°

TLT 10576238 M188886 Offziell

Main boom 23 m

Radius (m)	Jib length in (m)					
	22.7 t	28.7 t	34.4 t	40.4 t	49.1 t	60.8 t
37.6	10.0					
40	9.2					
44		7.9				
46		7.4				
48			6.8			
50			6.4			
55				5.3		
60					4.3	
65					3.7	
70						2.8
75						2.4

Main boom 32 m

Radius (m)	Jib length in (m)				
	22.7 t	28.7 t	34.4 t	40.4 t	49.1 t
43.9	6.9				
44	6.9				
46	6.5				
50		5.5			
55			4.5		
60				3.7	
70					2.4

Main boom 38 m

Radius (m)	Jib length in (m)			
	22.7 t	28.7 t	34.4 t	40.4 t
48	5.2			
50	4.9			
55		4.0		
60			3.2	
65				2.5

Main boom 47 m

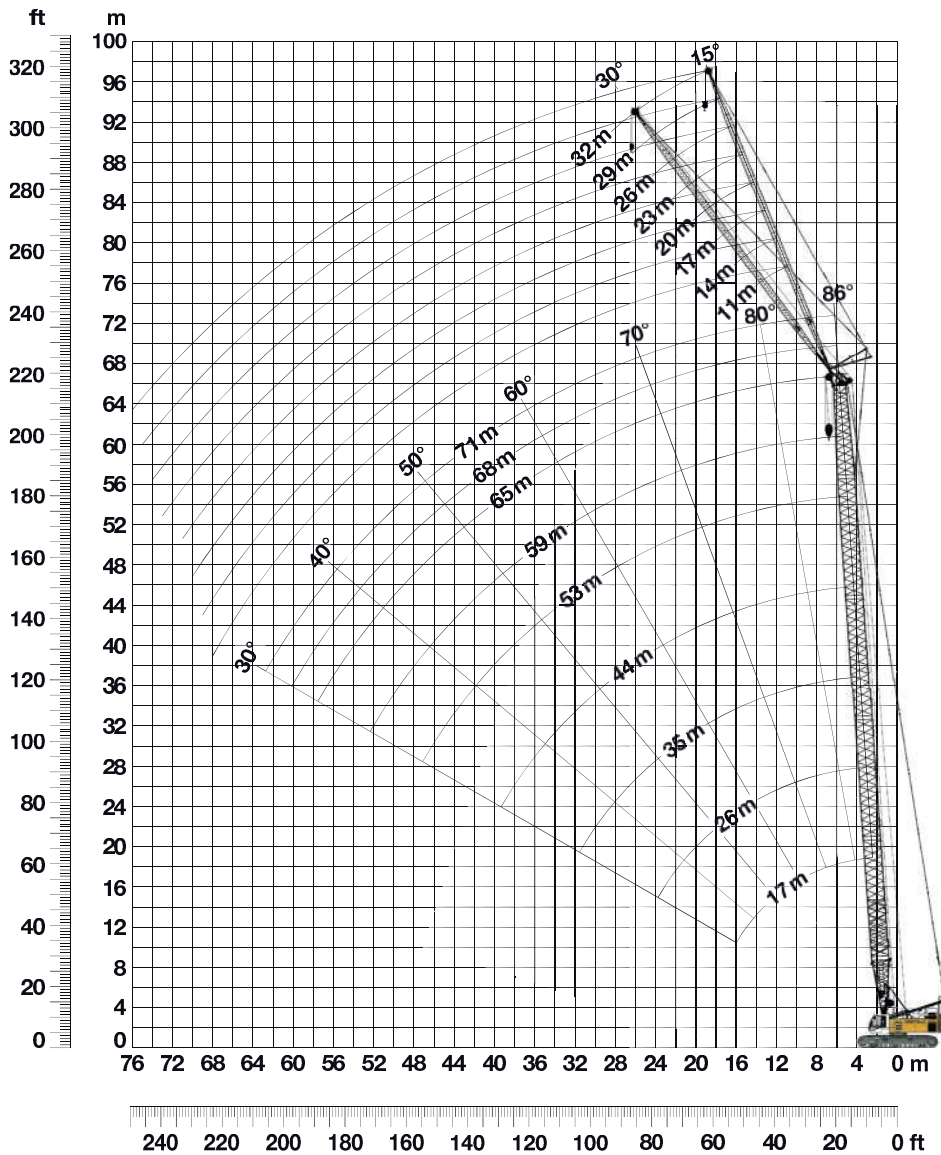
Radius (m)	Jib length in (m)		
	22.7 t	28.7 t	
54.5	3.1		
55	3.0		
60		2.3	

Capacities in metric tonnes with luffing jib (No. 1309.xx), 52.3 t counterweight + 20 t carbody counterweight. Above lift chart is for reference only. For actual lift duty and complete chart with all available configurations please refer to lift chart in operator's cab or manual.

Working range - fixed jib 15° and 30°

(No. 0806.xx)

Main boom 88° – 30°



Boom configuration for boom lengths (17 m – 71 m) – see table 1 on page 10

Fixed jib configuration for fixed jib lengths (11 m – 32 m)

	Length	Amount of fixed jib extensions								
		11	14	17	20	23	26	29	32	
Fixed jib foot	5.5 m	1	1	1	1	1	1	1	1	1
Fixed jib insert	3.0 m		1	1	1		1		1	1
Fixed jib insert	6.0 m			1	1	2	2	3	3	3
Fixed jib head	5.5 m	1	1	1	1	1	1	1	1	1
Fixed jib length (m)		11	14	17	20	23	26	29	32	

Lift chart - fixed jib (No. 0806.xx)

Offset 15°

TLT 10576238 M188886 Offziell

Main boom 17 m

Radius (m)	Fixed jib length in (m)			
	11 t	20 t	26 t	32 t
5.5	24.0			
10	24.0	14.2		
12	23.6	13.4	8.6	
15	22.5	12.3	7.9	5.0
16	22.0	11.9	7.7	4.9
18	21.1	11.3	7.3	4.7
20	19.4	10.8	7.0	4.5
24	16.8	9.7	6.4	4.2
26	15.6	9.2	6.2	4.1
36		7.5	5.5	3.6
42			5.3	3.5
48				3.3

Main boom 26 m

Radius (m)	Fixed jib length in (m)			
	11 t	20 t	26 t	32 t
5.8	24.0			
10	24.0	14.3		
12	24.0	13.6	8.7	
15	22.9	12.6	8.1	4.9
18	21.8	11.9	7.5	4.7
22	20.3	10.9	7.0	4.4
28	16.8	9.8	6.4	4.0
32	14.0	9.1	6.1	3.9
34	12.8	8.8	6.0	3.8
44		7.5	5.5	3.5
50			5.3	3.4
55				3.3

Main boom 35 m

Radius (m)	Fixed jib length in (m)			
	11 t	20 t	26 t	32 t
6.1	24.0			
10	24.0	13.6		
13	23.7	12.8	8.1	
15	23.2	12.3	7.8	4.9
18	21.8	11.5	7.4	4.7
24	19.3	10.4	6.7	4.3
32	13.6	9.4	6.1	3.9
40	9.7	8.4	5.7	3.7
42	9.0	8.2	5.6	3.6
50		7.2	5.3	3.5
55			5.2	3.4
60				3.3

Main boom 44 m

Radius (m)	Fixed jib length in (m)			
	11 t	20 t	26 t	32 t
6.4	24.0			
11	23.9	13.2		
13	23.1	12.7	8.1	
16	21.9	12.1	7.7	4.7
18	21.0	11.6	7.5	4.6
24	18.5	10.6	6.8	4.3
32	13.1	9.7	6.3	4.0
40	9.3	8.8	5.9	3.7
50	6.2	6.8	5.5	3.5
60		4.7	5.0	3.3
65			4.2	3.3
70				3.2

Main boom 53 m

Radius (m)	Fixed jib length in (m)			
	11 t	20 t	26 t	32 t
6.7	24.0			
11	22.5	12.3		
13	21.7	11.9	7.6	
16	20.5	11.3	7.4	4.7
24	17.1	10.0	6.5	4.3
32	12.7	9.3	6.1	4.0
40	8.9	8.2	5.8	3.7
48	6.3	6.9	5.5	3.5
55	4.7	5.2	5.1	3.4
65		3.5	3.8	3.3
70			3.1	3.2
75				2.7

Main boom 59 m

Radius (m)	Fixed jib length in (m)			
	11 t	17 t	26 t	32 t
6.9	22.4			
10	21.4	14.5		
14	19.9	13.7	7.4	
16	19.0	13.3	7.2	4.6
18	18.2	12.9	6.9	4.5
24	15.5	11.9	6.4	4.2
32	12.0	11.1	6.0	4.0
40	8.5	8.8	5.7	3.7
48	6.0	6.4	5.5	3.5
60	3.5	3.9	4.3	3.4
70		2.4	2.8	3.0
75			2.2	2.4

Main boom 65 m

Radius (m)	Fixed jib length in (m)			
	11 t	20 t	26 t	32 t
7.2	20.3			
11	19.2	11.0		
14	18.0	10.6	7.1	
16	17.2	10.3	7.0	4.5
18	16.4	10.0	6.8	4.4
24	14.1	9.2	6.3	4.2
32	11.2	8.5	5.9	3.9
40	8.2	7.6	5.6	3.7
48	5.7	6.3	5.2	3.5
65	2.4	2.9	3.2	3.1
70		2.2	2.5	2.7
75				2.1

Main boom 68 m

Radius (m)	Fixed jib length in (m)			
	11 t	20 t	26 t	29 t
7.3	19.1			
11	18.0	10.6		
14	16.8	10.3	7.0	
15	16.6	10.1	6.9	5.6
16	16.1	10.0	6.8	5.6
18	15.2	9.7	6.6	5.5
24	13.2	8.9	6.2	5.1
32	10.7	8.2	5.8	4.8
40	7.9	7.4	5.5	4.6
48	5.5	6.0	5.1	4.4
65	2.3	2.8	3.1	3.2
70		2.1	2.4	2.5

Main boom 71 m

Radius (m)	Fixed jib length in (m)		
	11 t	14 t	17 t
7.4	17.7		
9	17.4	14.8	
10	17.1	14.7	12.4
12	16.4	14.3	12.2
14	15.6	13.7	11.9
16	15.0	13.2	11.5
18	14.2	12.7	11.2
24	12.3	11.2	10.1
32	10.2	9.6	9.0
40	7.6	7.7	7.7
48	5.3	5.5	5.6
65	2.1	2.3	2.5

Capacities in metric tonnes with fixed jib (No. 0806.xx), 52.3 t counterweight + 20 t carbody counterweight. Above lift chart is for reference only. For actual lift duty and complete chart with all available configurations please refer to lift chart in operator's cab or manual.

Lift chart - fixed jib (No. 0806.xx)

Offset 30°

TLT 10576238 M188886 Offiziell

Main boom 17 m

Radius (m)	Fixed jib length in (m)			
	11	20	26	32
	t	t	t	t
8	24.0			
14	21.0	11.5		
18	18.0	10.2	6.7	
22	15.7	9.0	6.2	4.0
24	14.9	8.6	6.0	3.9
26	14.4	8.2	5.8	3.8
28	13.9	8.0	5.7	3.8
32		7.5	5.4	3.6
36		7.2	5.3	3.5
40			5.2	3.5
42			5.1	3.4
48				3.3

Main boom 26 m

Radius (m)	Fixed jib length in (m)			
	11	20	26	32
	t	t	t	t
8.3	24.0			
14	21.6	11.7		
18	19.9	10.7	6.8	
22	17.7	9.7	6.4	4.0
24	16.8	9.3	6.2	3.9
26	16.1	9.0	6.0	3.8
28	15.4	8.7	5.9	3.8
32	14.1	8.1	5.7	3.7
36	11.8	7.7	5.5	3.6
44		7.3	5.3	3.4
50			5.2	3.4
55				3.3

Main boom 35 m

Radius (m)	Fixed jib length in (m)			
	11	20	26	32
	t	t	t	t
8.6	23.4			
15	21.0	10.9		
18	20.1	10.3	6.6	
22	19.3	9.7	6.2	4.0
26	17.5	9.1	5.9	3.9
30	15.1	8.6	5.7	3.7
34	12.6	8.1	5.6	3.6
38	10.7	7.8	5.5	3.6
42	9.1	7.5	5.4	3.5
50		7.1	5.2	3.4
55			5.1	3.3
60				3.3

Main boom 44 m

Radius (m)	Fixed jib length in (m)			
	11	20	26	32
	t	t	t	t
8.9	22.1			
15	20.4	10.9		
19	19.3	10.2	6.5	
24	18.0	9.6	6.1	3.9
28	15.9	9.1	5.9	3.8
32	13.4	8.8	5.8	3.7
36	11.2	8.4	5.6	3.6
44	8.0	7.7	5.4	3.5
50	6.3	7.0	5.3	3.4
60		4.8	5.1	3.3
65			4.2	3.3
70				3.2

Main boom 53 m

Radius (m)	Fixed jib length in (m)			
	11	20	26	32
	t	t	t	t
9.3	20.6			
15	19.3	10.1		
19	18.1	9.6	6.2	
24	16.3	9.1	5.9	3.8
28	15.0	8.8	5.7	3.7
32	12.9	8.5	5.6	3.7
36	10.8	8.4	5.5	3.6
44	7.7	7.5	5.3	3.5
55	4.8	5.4	5.0	3.4
65		3.6	4.0	3.3
70			3.2	3.3
80				2.2

Main boom 59 m

Radius (m)	Fixed jib length in (m)			
	11	20	26	32
	t	t	t	t
9.5	19.3			
16	17.8	9.6		
19	16.5	9.3	6.0	
24	14.8	8.8	5.8	3.8
28	13.4	8.6	5.6	3.7
32	12.1	8.3	5.5	3.6
36	10.4	8.0	5.4	3.6
44	7.4	7.2	5.3	3.4
55	4.5	5.2	5.1	3.3
60	3.6	4.2	4.6	3.3
70		2.6	3.0	3.3
75			2.3	2.6

Main boom 65 m

Radius (m)	Fixed jib length in (m)			
	11	20	26	32
	t	t	t	t
7.2	20.3			
11	19.2	11.0		
14	18.0	10.6	7.1	
16	17.2	10.3	7.0	4.5
19	16.1	9.9	6.7	4.4
26	13.3	9.0	6.1	4.1
34	10.4	8.4	5.8	3.9
42	7.5	7.3	5.5	3.7
50	5.2	5.8	5.1	3.5
65	2.4	2.9	3.2	3.1
70		2.2	2.5	2.7
75				2.1

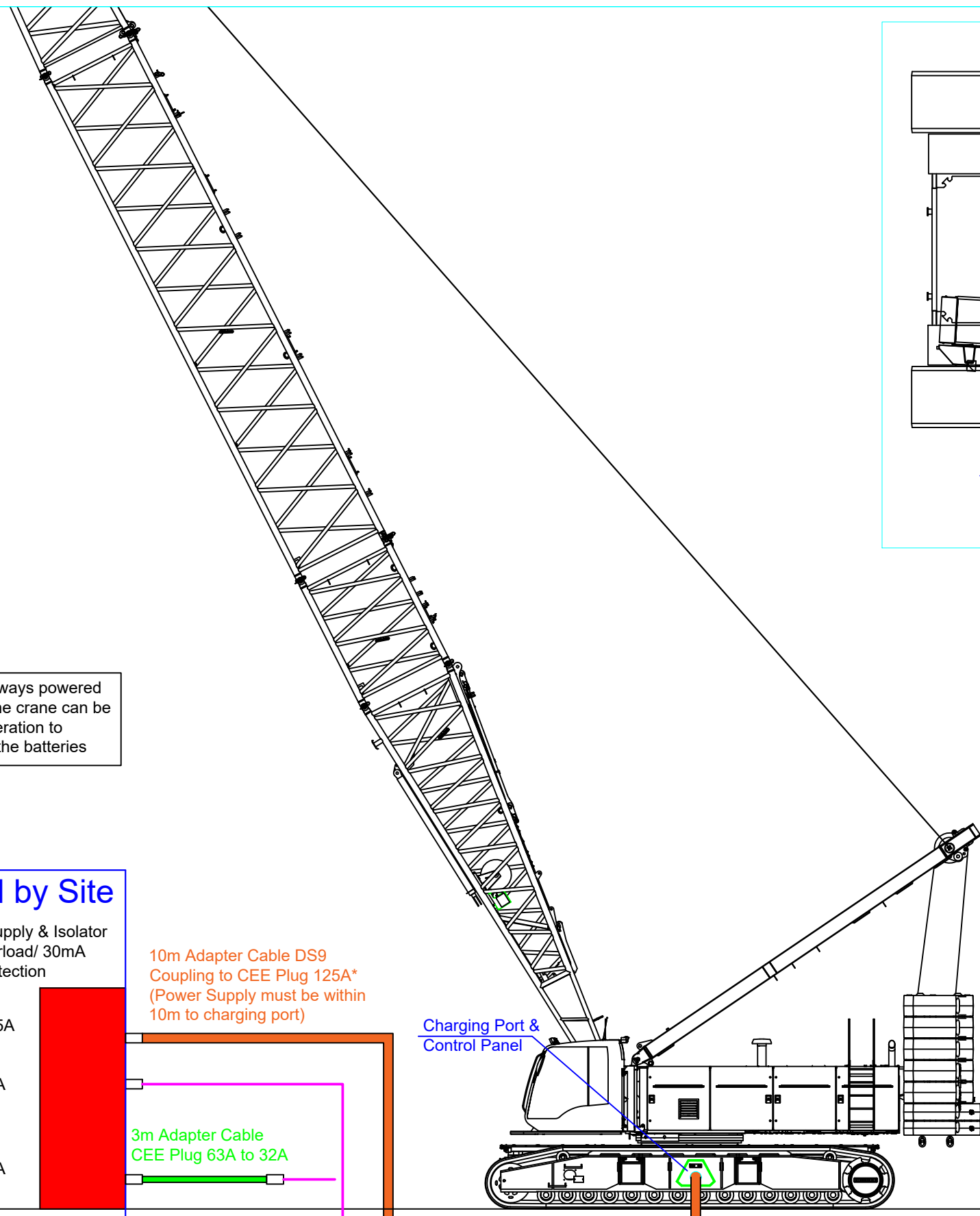
Main boom 68 m

Radius (m)	Fixed jib length in (m)			
	11	20	26	29
	t	t	t	t
7.3	19.1			
11	18.0	10.6		
14	16.8	10.3	7.0	
15	16.6	10.1	6.9	5.6
16	16.1	10.0	6.8	5.6
20	14.5	9.4	6.4	5.3
28	11.8	8.6	5.9	4.9
36	9.2	7.9	5.6	4.7
44	6.6	6.7	5.3	4.5
55	3.9	4.5	4.7	4.3
65	2.3	2.8	3.1	3.2
70		2.1	2.4	2.5

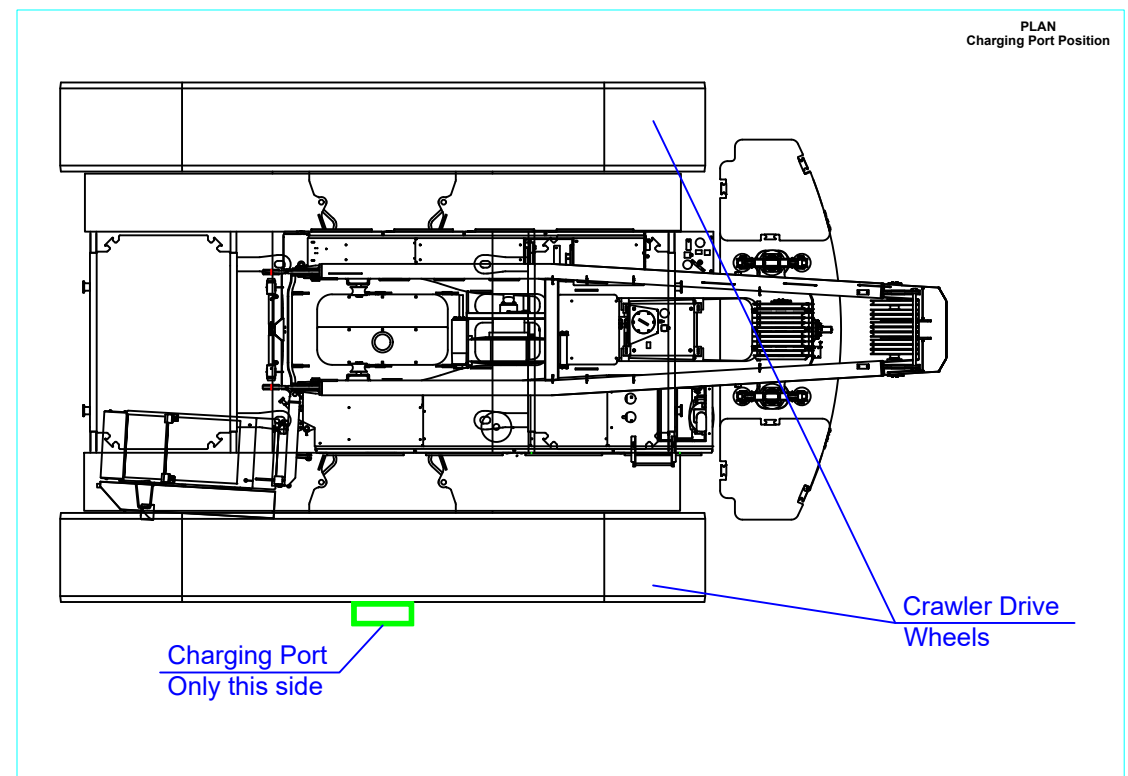
Main boom 71 m

Radius (m)	Fixed jib length in (m)			
	11	14	17	
	t	t	t	
9.9	15.4			
12	15.0	12.9		
14	14.5	12.6	10.8	
16	13.8	12.3	10.7	
18	13.3	11.8	10.4	
20	12.7	11.4	10.1	
24	11.6	10.5	9.5	
28	10.7	9.9	9.0	
36	9.1	8.7	8.1	
44	6.6	6.9	6.9	
55	4.0	4.2	4.4	
65	2.2	2.4	2.6	

Capacities in metric tonnes with fixed jib (No. 0806.xx), 52.3 t counterweight + 20 t carbody counterweight. Above lift chart is for reference only. For actual lift duty and complete chart with all available configurations please refer to lift chart in operator's cab or manual.



Note: The crane is always powered from the batteries - the crane can be plugged in during operation to continuously charge the batteries



NOTES

Additional cable lengths are available upon request, but longer cables than those shown in this document may experience additional power draw from the mains supply.

The battery charging cable is only to be installed/ removed by the operator or other authorised personnel.

It is the responsibility of site to ensure that the charging cable is protected and undamaged.

It is the responsibility of the lifting team, and not only the operator, to monitor and ensure there is sufficient battery charge to carry out the lifting/ tracking operation.

The power supply and electrical system is to be grounded through the power supply, the additional grounding equipment provided is for the crane superstructure and is only recommended to be installed when a lightning strike is likely.

When the crane is to be idle for extended periods the crane must be plugged in and will draw power to maintain the battery and charging circuit temperatures to extend their serviceable life.

CHARGING TIMES

Power Supply	Estimated Charging Time from 0%
125 A	2.5 hours
63A	4.5 hours
32 A	9 hours

Connection Type (Crane):	DS9
Power Supply:	3 phases + N + PE TN system design according to IEC 60364
Voltage Range:	360V to 440V (AC)
Frequency Range:	50hz to 60hz
Charging Current:	125A, 63A or 32A
Cables Supplied:	10m adapter cable from DS9 to CEE plus 125A 3m adapter cable of 125A CEE coupling on 63A CEE plug 3m adapter cable of 63A CEE coupling on 32A CEE plug 30m adapter cable of 63A CEE coupling on 63A CEE Plug [Available on Request]

Supplied by Site

Power Supply & Isolator with Overload/ 30mA RCD Protection

one of the following

- 400V 125A Supply
- 400V 63A Supply
- 400V 32A Supply

Supplied by Select

10m Adapter Cable DS9 Coupling to CEE Plug 125A* (Power Supply must be within 10m to charging port)

3m Adapter Cable CEE Plug 63A to 32A

Charging Port & Control Panel

10m Adapter Cable DS9 Coupling to CEE Plug 125A

30m Cable CEE Plug 63A to 63A **[Available Upon Request]**

3m Adapter Cable CEE Plug 125A to 63A

00	FOR INFORMATION	13/04/2021
AL		NH
SL		
Revision	Description (Purpose of Issue):	Date
Originator	Revision Items	Authoriser
Checker		

All drawings are in millimeters. Do not scale. This drawing is the property of Select Plant Hire (SPH). It must not be used, copied or reproduced without permission.
1. This drawing is based on the following information and is to be read in conjunction with all other relevant drawings. Any discrepancies, errors or omissions to be brought to the attention of Select Plant Hire Company Ltd.
2. All dimensions to be checked before commencement of work on site.

Originator:
SELECT PLANT HIRE COMPANY LIMITED

Logo:

Address:
Select Plant Hire Company Ltd.,
Explore Industrial Park,
Explore Way,
Workop,
Nottinghamshire,
S80 3PT.

Contact Details:
t: +44 (0)945 873 5936
f: +44 (0)1777 353026

Client:	VARIOUS
Project:	VARIOUS
Drawing Title:	LR1250.1 Unplugged Power Requirements & Responsibilities
Quote Number:	VARIOUS
Filename:	LR1250.1-UP-PRR-01-01
Scale At A3:	DNS
Revision:	00